

Anton Defant

Selected Works

- 1 Dimmer
- 2 Mayfly, Functional Collages
- 3 Ballast
- 4 Security Blanket
- 5 Megamix
- 6 Basecamp Series
- 7 Lutz
- 8 Tension Rail System

CV, Credits

	Anton Defant	Selected Works			
1	Dimmer	Lighting object	2018	75 × 75 cm	Burnt in screenprint in glass, Led floodlight in case, magnetic counter piece
2	Mayfly, Functional Collages				
3	Ballast				
4	Security Blanket				
5	Megamix				
6	Basecamp Series				
7	Lutz				
8	Tension Rail System				
	CV, Credits				

The *Dimmer* lamp turns a hidden technical component into an analogue interface for the regulation of light intensity. By sliding a magnetic light source by hand, brightness can be playfully explored, not following the lineare nature of common dimming-wheels. The lighting object is an experimental set up to explore the atmospherical effect of brightness on space.



1.1 Frosted glass disc with burnt-in scratch resistant screenprint, rectangular floor fixture, Light source with case, magnetic counter piece.



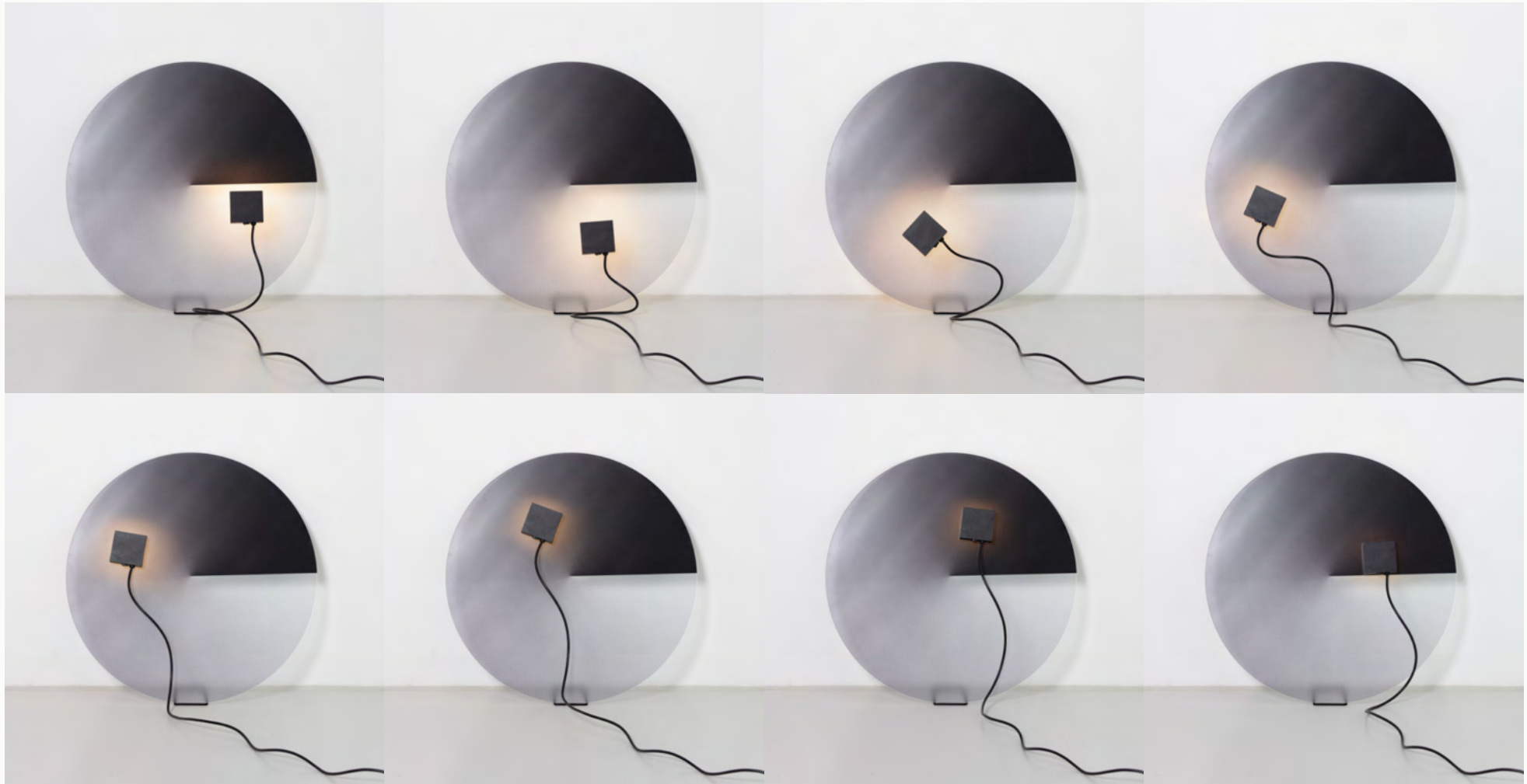
1.2 The light source is meant to be adjusted by hand.



1.3 Detail of glass colour gradient.



1.4 Whole object.



1.5 Dimming process.

1	Dimmer				
2	Mayfly, Functional Collages	Museum of Applied Arts	2019–2021	Varying in sizes	Assembled found Materials. Together with Benjamin Nagy.
3	Ballast	Vienna 2021 (duo show)			
4	Security Blanket	Series of functional sculptures			
5	Megamix				
6	Basecamp Series				
7	Lutz				
8	Tension Rail System				

CV, Credits

A dumpster is the no man's land between functional objects and recycled material. This place is the land of opportunities where every attempt of repurpose is beneficial. *Mayfly* sculptures start their lifecycle in this vacuum. They are built out of salvaged components, with avoiding radical modifications and limiting the use of tools. Without any prior planning, the built objects are defined by the elements available in the beginning. Only working with the resources on the spot, the designer becomes subordinate to the material they use, reversing traditional roles between them. In this mindset the designer builds without the responsibility of industrial practices, resulting in *Mayfly* sculptures. These makeshift collages embrace their new assigned functions in an additional lifecycle before finishing in the dumpster where they came from.



2.1 Throne, discarded server racks.



2.2 Reading lamp, discarded raillight system and cable ties.



2.3 Console, discarded waterdrains and cable ties.



2.4 Lounger, discarded storing shelf, chair tubing, shelf.



2.5 Bench, discarded metal shelf panels.



2.6 Floodlight, discarded shelf and neonlight.



2.7 Stool, discarded cable channels and cable ties.



2.8 Torch, discarded plexiglas box, coat hanger, candle.



2.9 Exhibition view, detail.



2.10 Exhibition view, full.

	Anton Defant	Selected Works			
1	Dimmer				
2	Mayfly, Functional Collages				
3	Ballast	Foldable sofa	2022	210 × 70 × 80 cm	Stainless steel, security belts, baggage net, disposable cushions
4	Security Blanket				
5	Megamix				
6	Basecamp Series				
7	Lutz				
8	Tension Rail System				
	CV, Credits				

Running shoes with a suit, hiking backpack in the subway, functional outdoor wear is no longer reserved for those who wish to protect themselves from the elements in nature. Their high efficiency and functionality allowed their relevance to shift into urban and domestic settings. Homes are no longer anchored but like basecamps travel with us through towns and countries depending on the momentary circumstances of our lives. Most of our furniture is not compatible with such lifestyle. Besides essentials like sleeping, cooking and facilities (light, water, heating), the resting object is the next one that defines our well being at home, it is also the least flexible one when it comes to moving. Acquiring a new one every time is easier than disassembling, transporting and storing of the already existing.

Ballast might be world's quickest to install three seater sofa: built up and down faster than you can check out your shopping cart online. The sofa is radically reduced to a seat and backrest that is suspended on a foldable frame. What remains is the skeleton of a sofa, where the core functions are fulfilled and the rest can be added by the user. (fits in a large suitcase)

Diploma project 2022



3.1 *Ballast* can be decreased to a size of 15 × 30 × 80 cm. The sofa weights 14 kg.



3.2 The sofa supports the seating comfort with three cushions that make it possible to comfortably lay or even sleep in the folding sofa.



3.2 Constructed like a classic camping chair, the sofa improves on the durability, material and visual quality.



3.3 Detail



3.4-1 WIP



3.4-2 WIP



3.5 Overview

	Anton Defant	Selected Works			
1	Dimmer				
2	Mayfly, Functional Collages				
3	Ballast				
4	Security Blanket	Solo Show at	2021	Varying in sizes	Multimedia: Wool, cotton, filling
5	Megamix	<i>okay works</i> gallery			
6	Basecamp Series				
7	Lutz				
8	Tension Rail System				
	CV, Credits				

Circling around the term *Security Blanket*, a term used in psychology commonly described as “a familiar blanket or other piece of soft fabric held by a young child as a source of comfort”, the exhibition displays works which reflect on the topic of toys and the thin line between comfort and harm, play and reality.



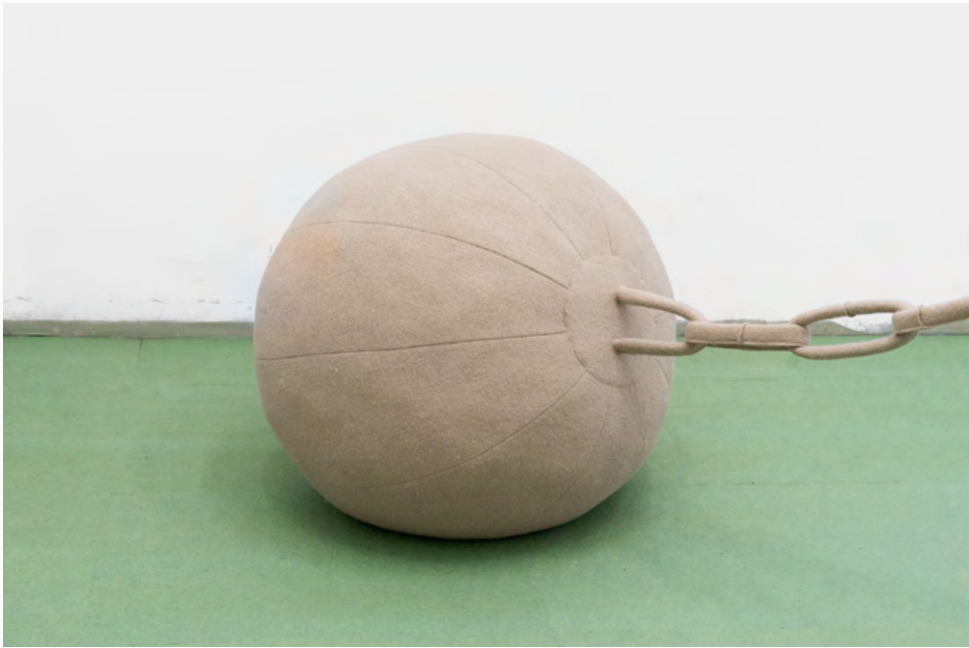
4.1 Exhibition view.



4.2 *Window blanket* In Play, blankets function as places to hide, to feel secure and to be warmed. It is the last barricade between the threatening outside and the protective inside. By cutting a window in this shell, the security seeker gets exposed. observing and being observed becomes possible. The societal question what to show, what to voyeuristically look at and the attempt of hiding what's unpleasant becomes a subject of play.



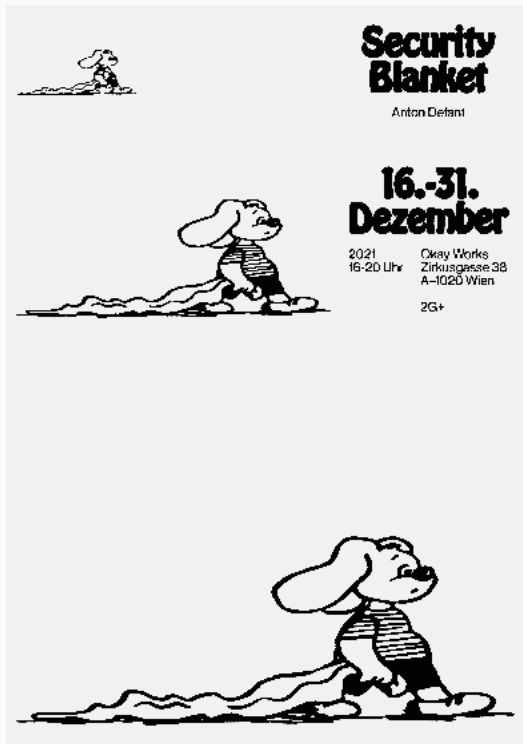
4.3 *Jumper Cable hand puppets* Connect, help out, revive, harm, shock or kill. The jumper cable hand puppets allow the user to role-play with the power of a high voltage connector.



4.4 *Soft Wrecking ball w/ chain* Turns a widely used symbol for destruction into a domesticated interior object. By losing its invulnerable materiality, the wrecking ball stands for a loving appreciation for the act of demolition.



4.5 *Electricity pole cuddly toy* Abstracts the form of a common structure into a soft shape.



4.6 Exhibition poster, designed by Julia von Arland.



4.7 Soft Wrecking ball with chain Detail.

1	Dimmer				
2	Mayfly, Functional Collages				
3	Ballast				
4	Security Blanket				
5	Megamix	Series of vases	2020	~ 30 × 15 cm	Earthenware
6	Basecamp Series				
7	Lutz				
8	Tension Rail System				

CV, Credits

Megamix is the opposite of the ingenious product. The series of ceramic vessels use preexisting resources, production methods, and a randomized process to question the relevance of design “from scratch”. Based upon the ideas of remixing and sampling in contemporary music, *Megamix* uses available designs and production methods, to compose something new. This design approach uses three ordinary vases from the discount store, their industrial molds, and glazes. The idea is simple: Cutting the two-sided plaster molds into four results in various new building blocks; Sufficient to assemble as many as 1,140,480 distinct compositions. A random generator chooses the shapes, stacking, and glazing of the new “mixes”. *Megamix* showcases the opportunities that we miss if we always start from zero in the form-finding process. It exposes the misbelief that good design arises from the brushstroke of a genius. Instead, *Megamix* demonstrates the endless abundance of resources from our discount stores next door, if we are ready to help ourselves.



5.1 Composition 11/1140480.



5.2 Composition 3/1140480.



5.3 Composition 5/1140480.



5.4 Composition 4/1140480.



5.5 Composition 11/1140480.



5.6-1-5 WIP

	Anton Defant	Selected Works			
1	Dimmer				
2	Mayfly, Functional Collages				
3	Ballast				
4	Security Blanket				
5	Megamix				
6	Basecamp Series	Paris Fashion Week	2022	Varying in sizes	Mixed media. Together with Benjamin Nagy.
7	Lutz	DACH-Showroom			
8	Tension Rail System	Vienna Design Week			
	CV, Credits	Esterhazygasse 22 (Duoshow)			

A Landscape with bright blue sky and green grass. In this open world familiar objects are scattered. They gather and rest in a campsite-like setting. A traveling and everchanging exhibition dedicated to the physical and emotional furnishing one needs to feel at home.

Originating from the idea of the basecamp as a temporary home in transit, the concept initially began as an exhibition format during Paris Fashion Week. It later evolved into a permanent installation and concept space, opening every second weekend, which regularly transformed its interior to host an aperitivo bar, interdisciplinary exhibitions, concerts, and video screenings until it was shut down by the Austrian government. *Basecamp* served as a space to enjoy art, gather and celebrate, offering a temporary living room for Vienna's creative community.



6.1 Pflock A stool based on Ikea's famous children chair *Mammut*. Made out of spruce wood.



6.2 *Fluffy Mono Bloc Chair* Icon of plastic-mass-production turned into a warm and fluffy character.



6.3 *Basecamp Monogram Suitcase* From the workshop to the hotel lobby and beyond: After hammering over 1200 individual letters by hand, this aluminium storage box is turned into a reinterpretation of the classic monogram suitcase.



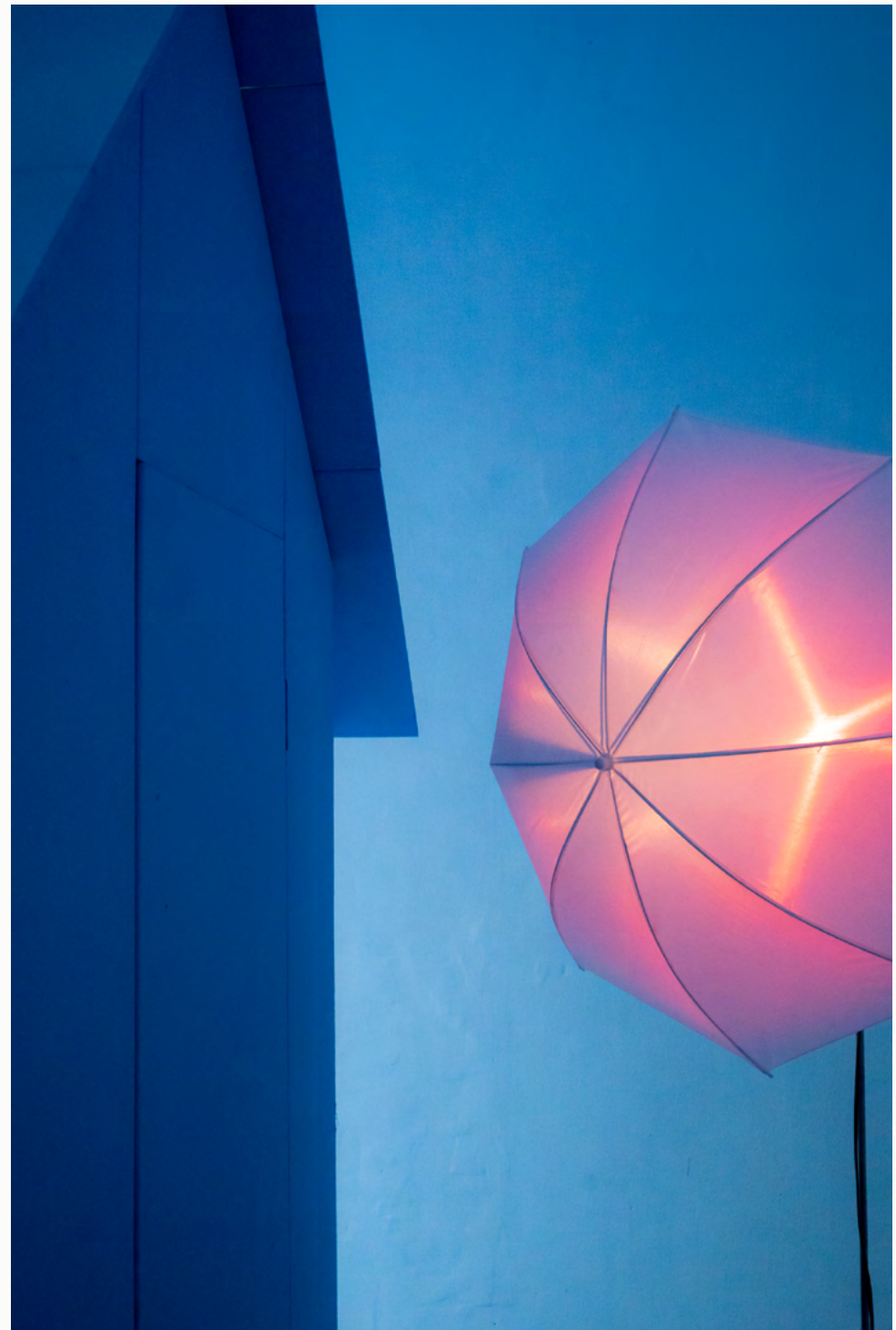
6.4 *Chimney Lamp* Turning outside in and inside out, the chimney lamp is a readymade take-on to the typology of a mushroom lamp.



6.5 Exhibition overview.



6.6 *Sonne* backside.



6.7 *Sonne* A permanent sunrise, based on the typology of a studio flash.



6.8 Basecamp Vienna Design Week, exhibition view.

Vienna Design Week
Esterhazygasse 22
(Live act)

Meatcomputer



6.11 House adaptation for live performance.



6.12 Detail



6.13 *Meatcomputer* performance at Basecamp with broken roof.

Vienna Design Week
Esterhazygasse 22
(Duo show)

2022

Homesick



6.14 Exhibition view of *Homesick*.

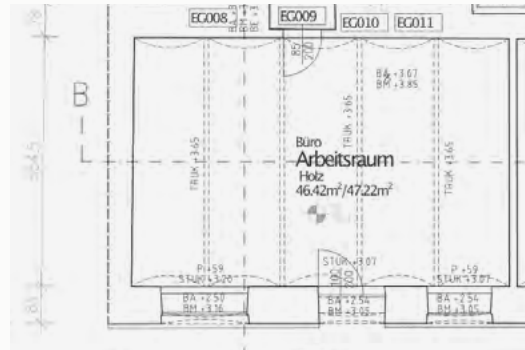


6.15 *Men's best friend* An antique table with fake fur. Finally it turns into a domestic animal, men's best friend.

6



6.16 Esterhazygasse 22 before Basecamp.



6.17 Esterhazygasse 22 floorplan.



6.18 Deconstructing Basecamp.

1	Dimmer				
2	Mayfly, Functional Collages				
3	Ballast				
4	Security Blanket				
5	Megamix				
6	Basecamp Series				
7	Lutz	for Brandelhuber +	2023	46,6 × 64,2 × 17,9 cm	Sanitary ware. Together with Matthias Gschwendtner.
8	Tension Rail System	Berlin			

CV, Credits

Designed in the 1970s, Luigi Colanis *wave* sink, is a great example for an Industrial design of sculptural and formal quality, which distinguishes itself from other sinks until today. Nonetheless its functional deficits and entrenchment in the late 20th century makes it in need of a redesign.

By decomposing the *wave* to its main characteristics (cheeks, mouth, lip, eyes and body) and introducing it to contemporary design and production methods, *Lutz* aims to recompose the original to balance between improved functional aspects and more comprehensive formal stringency. Restoring the design to ensure its future relevance.



7.1 Scan of the wave sink by Luigi Colani for Villeroy & Boch, 1974.



7.3 Double-faced washbasin with mirror in curry-yellow by Luigi Colani for Villeroy & Boch, 1979.



7.4 The new sink design features a complete new geometry and flattened out parts in the back of the sink.



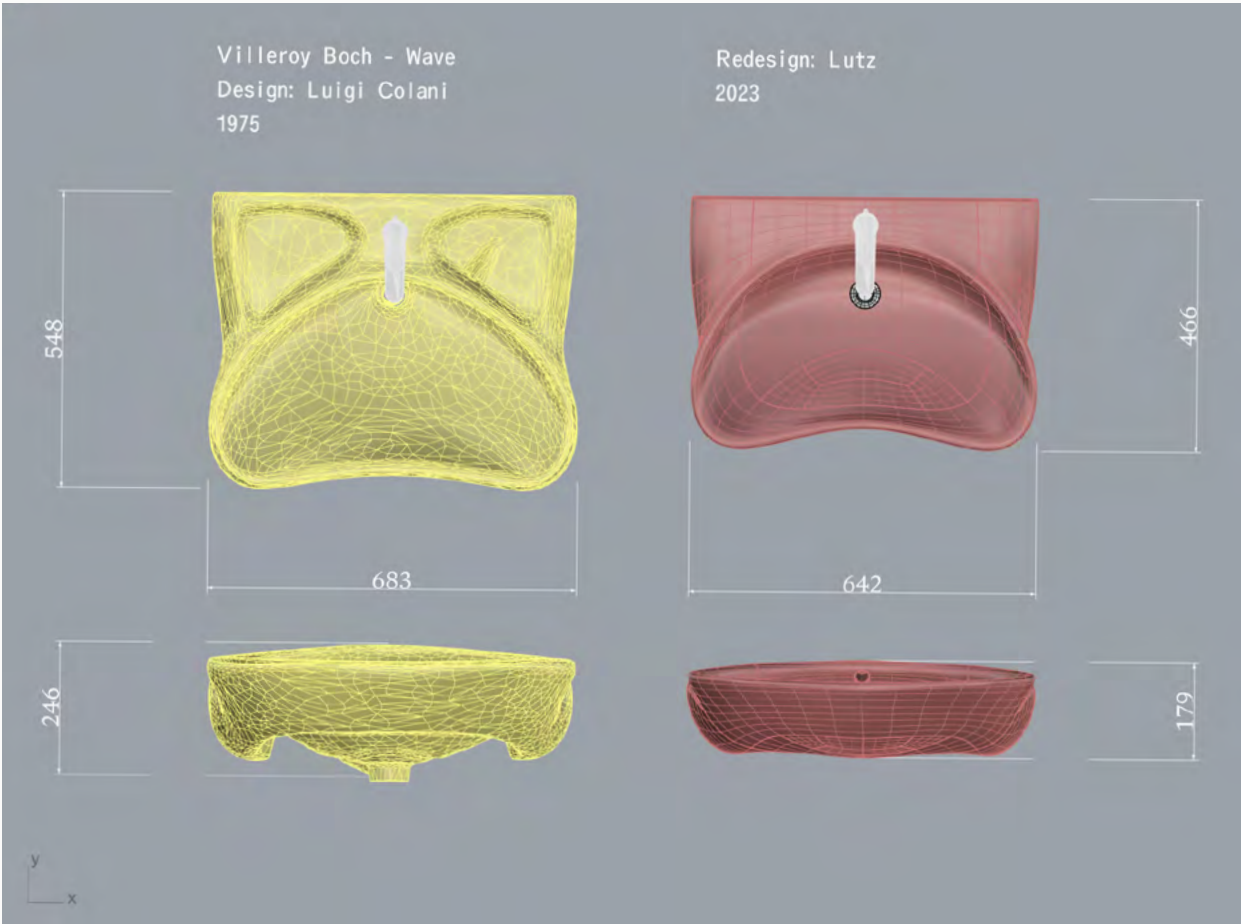
7.5 Backside of the sink with drain line detail.



7.6 Transition detail from cheeks to mouth.



7.7 The design revolves around the concept of *flushing out* the current shape.



7.8 WIP size comparison.



7.9-1-5 WIP

1	Dimmer				
2	Mayfly, Functional Collages				
3	Ballast				
4	Security Blanket				
5	Megamix				
6	Basecamp Series				
7	Lutz				
8	Tension Rail System	For mfpen Herreekvipering Copenhagen/Paris	2023	110/140/220 × 170 × 50 cm	Aluminium U-profiles, steal wire, bolts and nuts
	CV, Credits				

Tension Rail System, designed for the needs of the danish fashion brand *mfpen*, is a lightweight rail system composed of standard aluminium U-profiles that allow to be assembled and disassembled quickly. The system is based on a self developed plug joint that is fastened by adjustable steal wires.



8.1 110 × 170 × 50 cm rail.



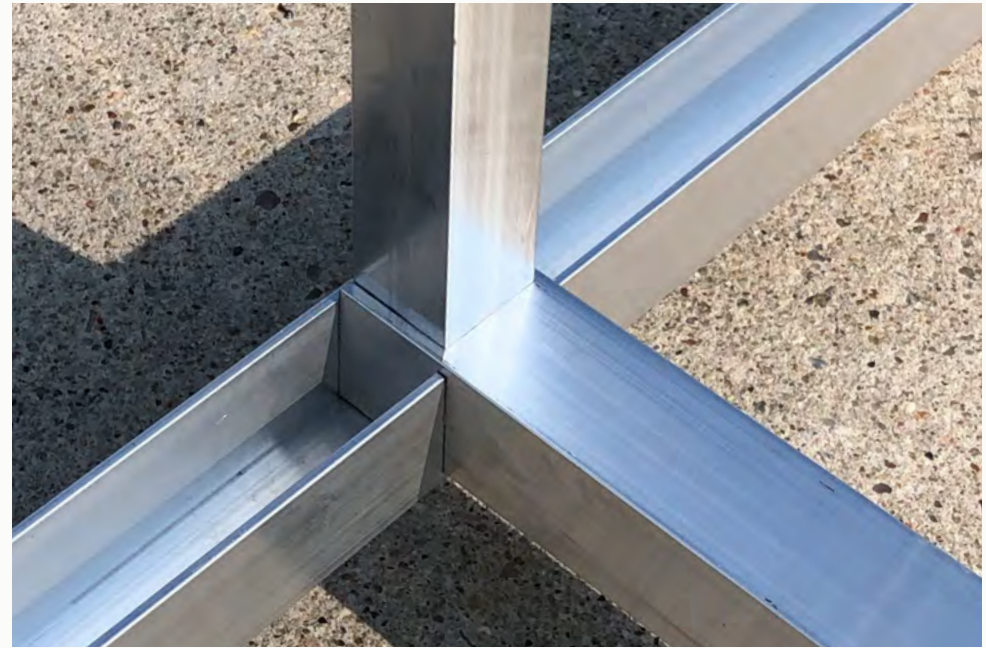
8.2 All ten meters of rail can be reduced to a bundle of 8 rods, each measuring 170 cm.



8.3 220 × 170 × 50 cm double-rail.



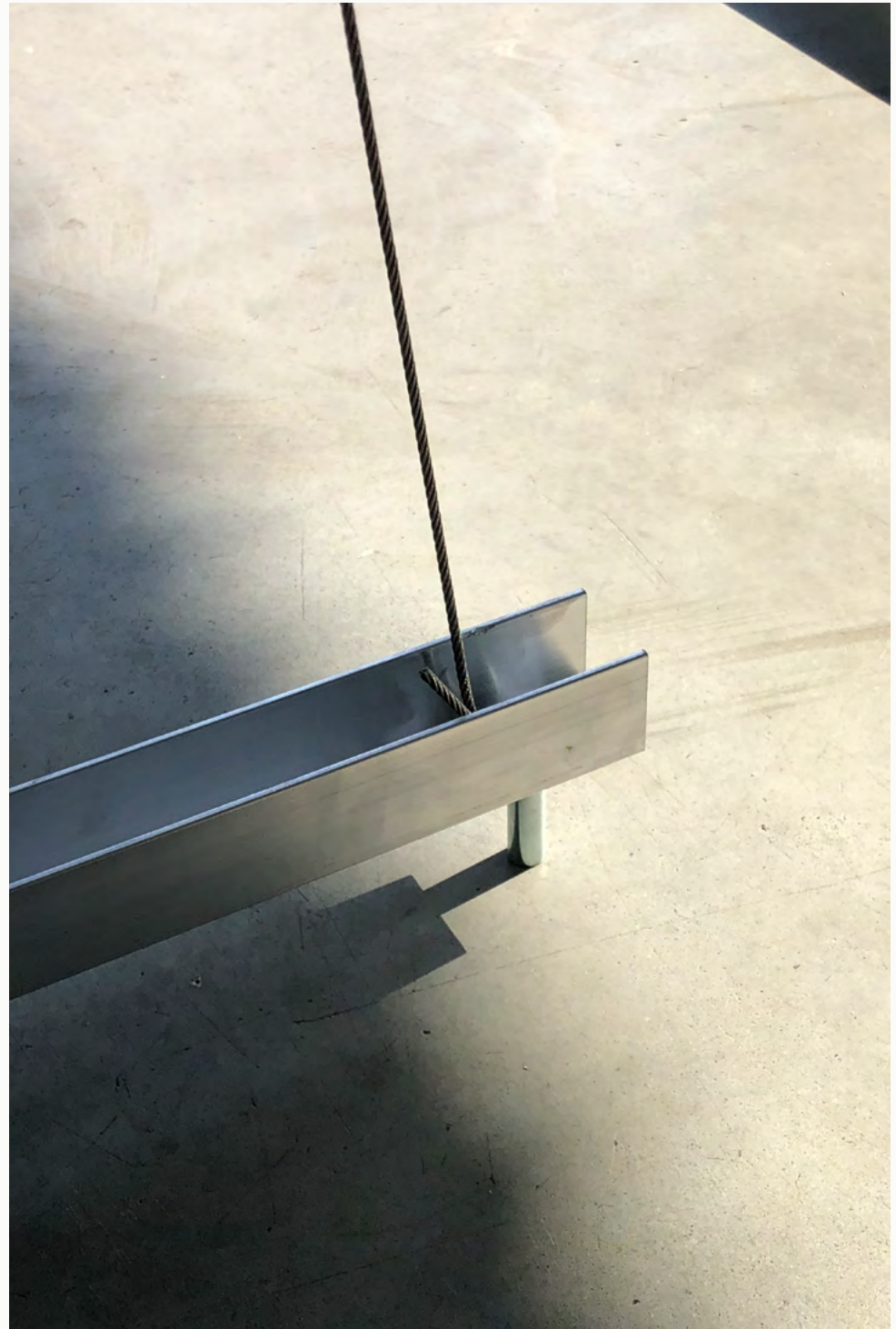
8.4 Plug joint.



8.5 Consisting of two U profiles and one square profile, the rail retains most of its sturdiness through a slit based plug connection.



8.6 Top detail of the wire connection.



8.7 Feed solution with sleeve nut.



8.8 The wires are tensioned using a turnbuckle.



8.9 Rail in action at the mfpn office.

1	Dimmer
2	Mayfly, Functional Collages
3	Ballast
4	Security Blanket
5	Megamix
6	Basecamp Series
7	Lutz
8	Tension Rail System

CV, Credits

Anton Defant *08.11.1995 (Kiel, Germany)	Am Wasserwerk 22F 10365 Berlin, Germany	+49 157 54121001 antondefant@gmail.de	@toni_donau antondefant.com
---	--	--	--------------------------------

EDUCATION

Universität für angewandte Kunst Wien
Industrial Design, Studio Stefan Diez
01.02.2018–01.07.2022 (Diploma)
Willem de Kooning Academy Product Design
01.02.2020–01.08.2020 (Exchange Semester)
Universität für angewandte Kunst Wien
Industrial Design, 01.09.2016–01.02.2017
Studio Anab Jain
Gymnasium Wellingdorf
01.08.2002–01.08.2015 Schloss Kobenzl 2017

WORK EXPERIENCES

Vöslauer Mineralwasser
installation, vienna designweek, 2023
Ballast corner chair
commissioned sofa, 2023
Brandlhuber+
Redesign of colani sink, 2023
mfpn
collapsible rail system, 2023
Vöslauer
Diamond Chair, furniture design, 2023
Petar Petrov
Vienna Showroom, Costume furniture, 2023
Christina Seewald
Paris fashionweek, showroom installation, 2022
10 Volt Festival
Art direction print, 2022
“New items from the warehouse”
by Klemens Schillinger, Assistens, 2021/2022
Wiener Staatsballet
print campaign, artdirection, 2022
The Gelinaz
Healthy Boy Band, scenographie, 2021
Sprenger Solutions
industrial series, stage design, 2021
Adidas originals x Solebox
collectible furniture, assistents, 2021
Rimowa
cage bag, assistens, 2021
Artist Residency
at Burggasse 98, 2021
Design-Assistent
at Klemens Schillinger, 2021-present
Book publishing of an archival collection of drawings, 2020
Independent design practice, commissioned furniture, 2020
Commissioned furniture, Burggasse 98 Showroom, 2020
Merchandise design for Heimat, Wien, 2018
Browse, private conceptual fashion brand, 2018
Babob, concept development for toy design, 2017
Poster Designs for Kammerorchester St. Anna Bardenfleth, 2016

PUBLIC

Hund Hund Magazine
artist interview, 2023
Vöslauer campaign
artist feature, 2023/24
Basecamp
self led concept space, Vienna, 2022/23
Form magazine
student to watch, 2022
Naza collective
basel 2022
permanent collection, museum of applied arts vienna
(mayflythrone), 2021
Vogue Germany
editorial feature, 2021
Adidas x Sevenstore
Artist Portrait, 2021
Antropogato Projects
Milan, 2021
Second Publication
Copenhagen, 2021
Drawings
self published book of drawings, 2020
Fiat Panda goldenhour
self published fanzine, 2020

SHOWS AND PRICES

ballast
Nominee Pure Talents Award, IMM Cologne 2024
ballast
360 Design Festival, Budapest 2023
Diamond Chair
Vienna Design Week 2023
Homesick
Basecamp vienna 2022/23, Duo show with Benjamin Nagy
balast
Nominee diploma selection, designblok Prague 2022
Basecamp
DACH, Paris 2022, Duo show with Benjamin Nagy
A shop is a shop is a shop
Kunsthalle Vienna 2022, Group show
Security Blanket
Okay works gallery 2021, Solo show
Mayfly functional collages
Museum of applied arts Vienna 2021, Duo show with Benjamin Nagy
New Work
Museum of applied Arts Cologne 2021, Group Show
Toy Story
Vienna Design Week 2021, Duo show with Benjamin Nagy
Andere brauchen ihren Sitzplatz notwendiger
FJK3 Vienna, 2021, Group Show
New Work
Angewandte Festival, 2021
Blumen etc.
Burggasse 98, 2021, Solo Show
Lightmaterials
Paralel Vienna, Art Fair, 2020
Light Materials
Burggasse 98 Editions, 2020
Joints and Fittings
Berlin Design Week 2019
Joints and Fittings
Milan Design Week 2019
Declared Design Challenge,
Jury selection, 2019
Dimmer
The Essence, 2018
Biometrics
Vienna Viennale, 2017
Windows 95
Schloss Kobenzl 2017

CREDITS

Graphic Design: Simon Merz Studio
Photography: Zentrale digitale Fotowerkstatt,
Universität für angewandte Kunst Wien
Ausstellungsansicht, MAYFLY, Functional Collages 2021,
MAK Wien, CC Mak/Simon Verres
VIENNA DESIGN WEEK / Kollektiv Fischka/... (c)

- 1 Dimmer
- 2 Mayfly, Functional Collages
- 3 Ballast
- 4 Security Blanket
- 5 Megamix
- 6 Basecamp Series
- 7 Lutz
- 8 Tension Rail System

CV, Credits